



www.jacksontrailers.com

Jackson Mfg. Co., Inc.

2153 County Street 2827 * Chickasha, OK 73018

Phone: 405.224.6013 * Fax: 405.224.2402

Website: jacksontrailers.com

Omega Slant Load Bumper Pull

OPTIONS

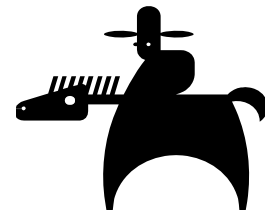
Mangers (ea.)	\$ 180.00
Tack door under Manger	180.00
Rear Tack	632.00
Side Ramps (1 stall)	590.00
(2 stalls)	93000
Rear Ramp	465.00
Double Rear Doors	
with (2) Cam Latch includes:	
Rubber Bumper	330.00
Windows in Rear Door (ea)	190.00
Escape Door	302.00
Additional Length (per ft.)	558.00

Standard Equipment

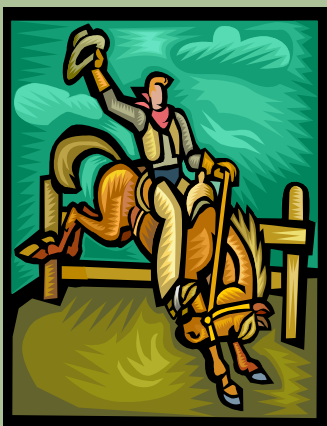
**Galvaneal Sheet Metal Undercoated Roof * 4 Wheel Electric Brakes
7' Tall * Insulated Metal Lined Horse Area * 1 Roof Vent (per horse)
Feed Bags * Down Feed Doors with Windows & Bars * Torsion Axles
2 Dome Lights * Saddle Racks * Mounted Spare Tire * Floor Mats
Diamond Plate Gravel Guards * 2 Color Sunfire Paint * Rubber Lined
Padded Dividers * Breakaway * Radial Tires * Slanted Tack in Front
Bridle Hooks * Camper Vent * Carpet * Clothes Rod
Omega Door with Window**



August 2012



See Your Local Dealer



SPECIFICATIONS

2 Horse Slant Load:

Size: 78"X13'
Axles: (5 hole) 3500#
Weight: Approx. 3600#

PRICE: \$ 13,708.00

3 Horse Slant Load:

Size: 78"X16'
Axles: (6 hole) 6000#
Weight: Approx. 4300#

PRICE: \$ 16,678.00

4 Horse Slant Load

Size: 78" X 19'3"
Axles: (8 hole) 6000#
Weight: Approx. 5100#

PRICE: \$ 19,994.00